



Synway SHR Series

SHR-4D/PCI

Driver Installation Manual

Hangzhou Synway Information Engineering Co., Ltd

www.sanhuid.com

Contents

Contents.....	i
Copyright Declaration	1
Chapter 1 Installation of Driver Program	2
Chapter 2 Configuration of Radar Board.....	6
Appendix A Technical/sales Support.....	7

Copyright Declaration

All rights reserved; no part of this document may be reproduced or transmitted in any form or by any means, electronic or mechanical, without prior written permission from Hangzhou Synway Information Engineering Co., Ltd (hereinafter referred to as 'Synway').

Synway reserves all rights to modify this document without prior notice. Please contact Synway for the latest version of this document before placing an order.

Synway has made every effort to ensure the accuracy of this document but does not guarantee the absence of errors. Moreover, Synway assumes no responsibility in obtaining permission and authorization of any third party patent, copyright or product involved in relation to the use of this document.

Chapter 1 Installation of Driver Program

The Synway radar data recording board (radar board) has an independent driver program. Below is the installation procedure:

Step 1: Insert radar board into a free PCI slot, boot pc and the following dialog box appears:



Click on 'Cancel'.

Note: The driver will install the hardware automatically without the need to install 'Found New Hardware Wizard'.

Step 2: Start radar board driver installation program. The following dialog box appears:

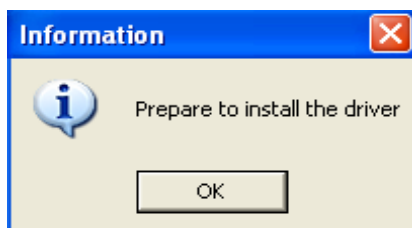


Choose the proper language and click on 'OK'.

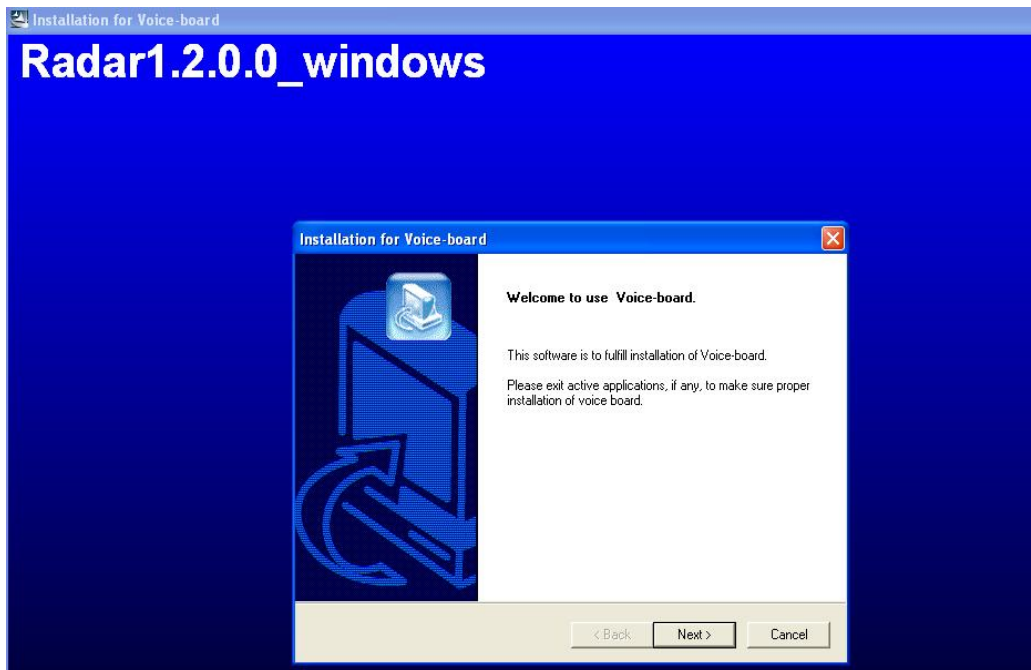
Step 3: Click on 'Yes' to accept the Software License Agreement and continue the installation:



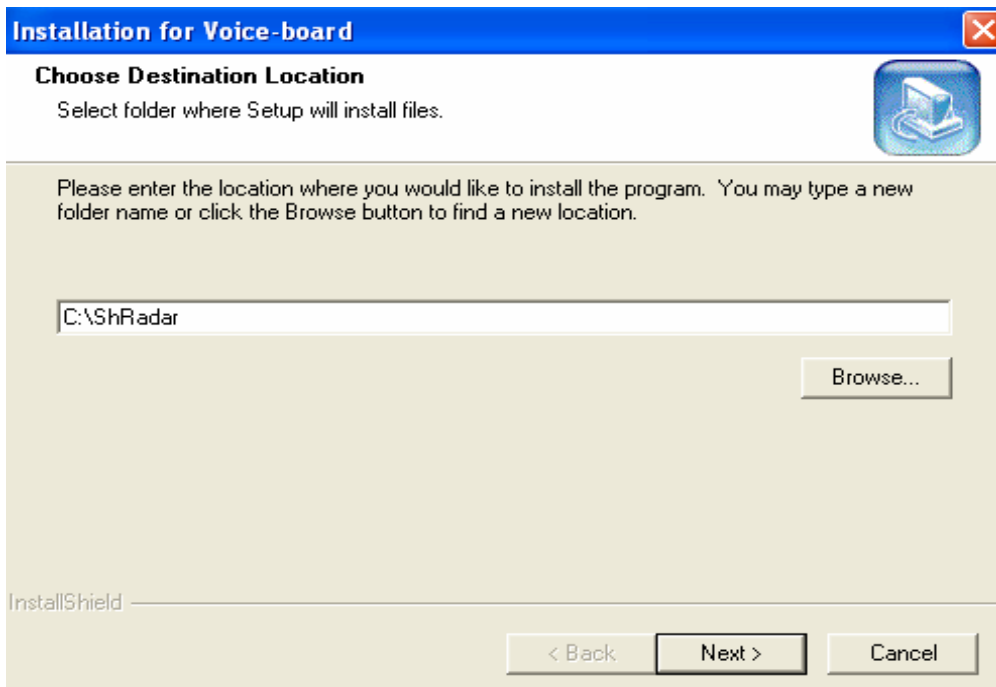
Step 4: Click on 'OK' to start the driver installation:



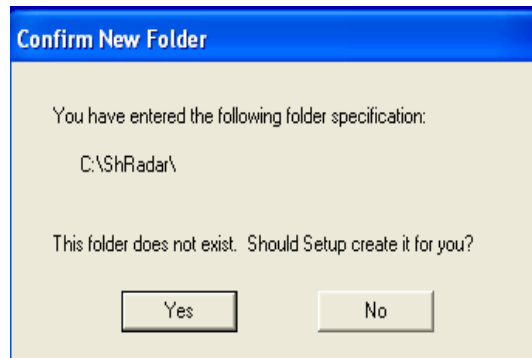
Step 5: Stop and exit active applications. Click on 'Next' to continue the driver installation:



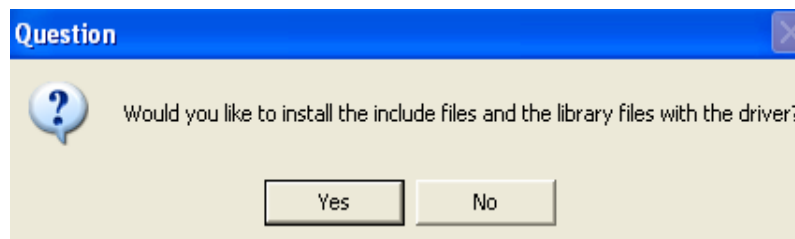
Step 6: Click on 'Browse' and choose an installation path or input a new folder name. Click on 'Next' to continue:



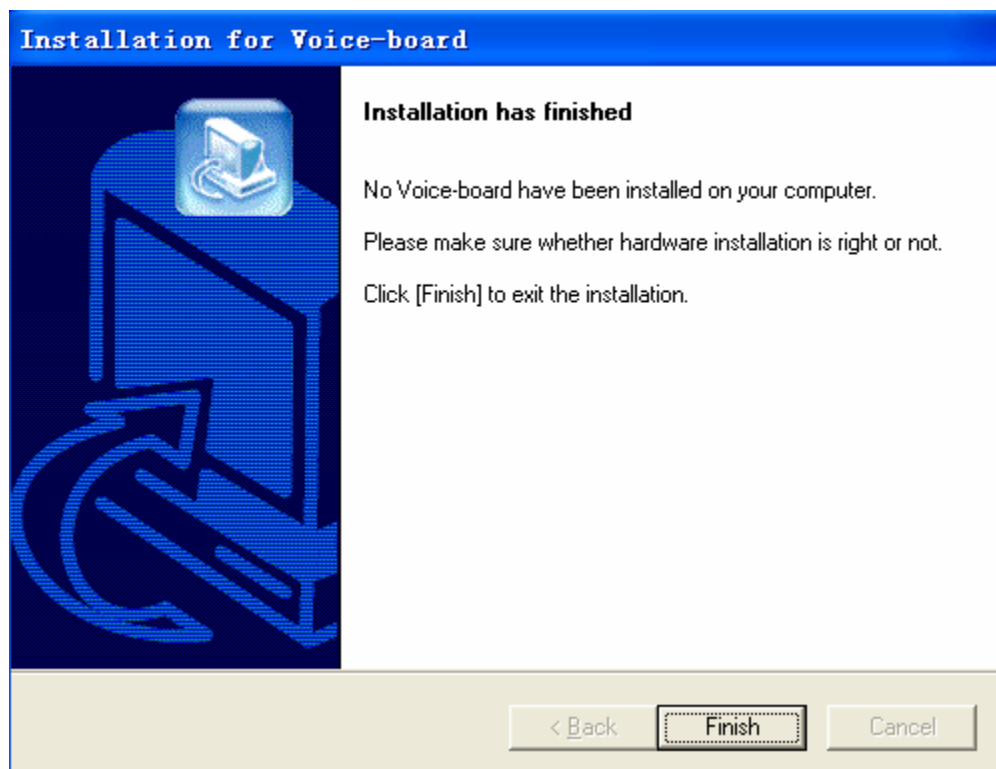
Step 7: Click on 'Yes' to create a new folder if it does not exist, or click on 'No' back to Step 6 for modification.



Step 8: If software development is needed, click on 'Yes' to install the API header and library files, otherwise, click on 'No'.



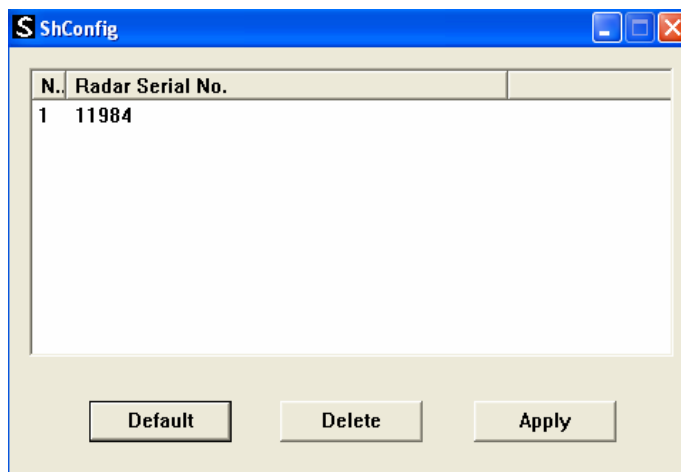
Step 9: After the system has installed the driver, it shows the following dialog box:



Click on 'Finish' to complete the installation.

Chapter 2 Configuration of Radar Board

Run 'ShConfig.exe' which is under the installation directory of the driver to arrive the dialog box as shown below:



Click on 'Default'. You will receive the number of the radar boards and a serial number for each board for subsequent use. (You can remove an unwanted radar board by selecting it from the list and clicking on 'Remove'). Click on 'Apply' to complete the configuration.

Appendix A Technical/sales Support

Thank you for choosing Synway. Please contact us should you have any inquiry regarding our products. We shall do our best to help you.

Headquarters

Hangzhou Synway Information Engineering Co., Ltd
<http://www.synway.net/>
11/12/F, QiLun Building, No.385, Wen'er Road, Hangzhou,
P.R.China, 310012
Tel: +86-571-88860561
Fax: +86-571-88850923

Technical Support

Tel: +86-571-88864579
Mobile: +86-13735549651
Email: techsupport@sanhuid.com
Email: techsupport@synway.net
MSN: scycindy_sh@hotmail.com

Sales Department

Tel: +86-571-88860561
Tel: +86-571-88864579
Fax: +86-571-88850923
Email: sales@synway.net